

SEL-651R

Advanced Recloser Control

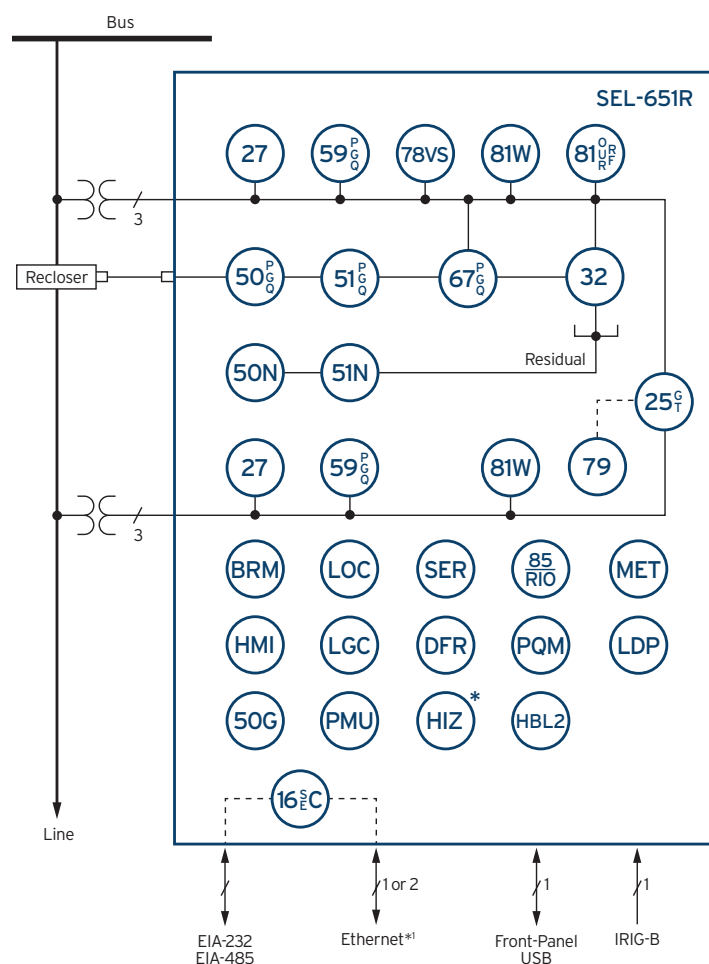


The industry's gold standard for recloser control

- Advanced recloser protection capabilities support coordinated high-speed fault isolation and restoration.
- Three- or single-phase tripping minimizes customer outages and improves reliability metrics.
- Arc Sense™ technology improves public safety and minimizes fire dangers caused by downed conductors.
- Fast islanding detection, precise synchronization, and IEEE 1547-2018 tripping let you safely interconnect distributed energy resources (DERs).
- Second-harmonic blocking secures overcurrent elements from transformer inrush.



Functional Overview



ANSI NUMBERS/ACRONYMS AND FUNCTIONS

16 SEC	Access Security (Serial, Ethernet)
25 (G,T)	Generator/Intertie Synchronism Check
27	Undervoltage
32	Directional Power
50G	Best Choice Ground
50N	Neutral Overcurrent
50 (P,G,Q)	Overcurrent (Phase, Ground, Negative Sequence)
51 (P,G,Q)	Time Overcurrent (Phase, Ground, Negative Sequence)
51N	Neutral Time Overcurrent
59 (P,G,Q)	Overvoltage (Phase, Ground, Negative Sequence)
67 (P,G,Q)	Directional Overcurrent (Phase, Ground, Negative Sequence)
78VS	Vector Shift
79	Autoreclosing
81 (O,U,R)	Frequency (Over, Under, Rate)
81RF	Fast Rate-of-Change of Frequency
81W	Frequency Window
85 RIO	SEL MIRRORRED BITS® Communications
DFR	Event Reports
HIZ	SEL Arc Sense Technology (AST)*
HMI	Operator Interface
LGC	SELLogic® Control Equations
MET	High-Accuracy Metering
PMU	Synchrophasors
PQM	Voltage Sag, Swell, and Interruption
SER	Sequential Events Recorder

ADDITIONAL FUNCTIONS

BRM	Breaker Wear Monitor
HBL2	Second-Harmonic Blocking
LDP	Load Data Profiling
LOC	Fault Locator

*Optional feature ¹Copper or fiber-optic

Compatible With Popular Reclosers

The SEL-651R Advanced Recloser Control works with a wide range of reclosers for complete plug-and-work capability. All interfaces are designed and tested to exceed the IEEE C37.60 standard. Certificates are available at selinc.com/SEL-651R.

G&W

Control Power Viper-S

Viper-LT

Viper-S

Viper-SP

Viper-ST

Viper-G

Other Reclosers

Elastimold Molded Vacuum Recloser (MVR)

Joslyn TriMod 300R

Joslyn TriMod 600R

OVR-3 (15 and 27 kV only)

Gridshield 32-Pin (15, 27, and 38 kV)

Gridshield 42-Pin (15, 27, and 38 kV)

Togami FAULT CLEAR (27 kV)

VR-3S (15 and 27 kV only)

CXE

NOVA Auxiliary Powered

NOVA Control Powered

NOVA NX-T

NOVA NX-STs

NOVA-TS Triple-Single

NOVA-STs Triple-Single

RE

RVE

RXE

VSA

VSO

Other Reclosers, Continued

VWE

VWVE 27

VWVE 38X

WE

WVE 27

WVE 38X

GVR*

SDR Triple-Single

SDR Three-Phase

OSM AI_4

*When equipped with interface module

A Single Multi-Recloser Interface Works With Several Reclosers

Stock one recloser control to support several recloser models. You can connect any of the following reclosers to the SEL-651R with the Multi-Recloser Interface:

G&W

Viper-LT

Viper-ST

Other Reclosers

Elastimold MVR

Gridshield 32-Pin (15, 27, and 38 kV)

Gridshield 42-Pin (15, 27, and 38 kV)

NOVA NX-T

NOVA NX-STs

OSM AI_4

SDR Three-Phase

SDR Triple-Single

Key Features

Plug-and-Work Compatibility for Many Reclosers

Interfaces for the SEL-651R are available for many different reclosers. Using a common recloser control across your system simplifies installation, reduces training, and reduces operation errors.

Single-Phase Trip and Reclose

Reduce system and customer impacts with single-phase tripping and reclosing. You can improve reliability by maintaining service to customers who are not on the faulted phase of the feeder.

High-Impedance Fault Detection

SEL AST detects many high-impedance faults and downed conductors while maintaining secure protection. AST in the SEL-651R puts high-impedance fault detection out on the feeder, reducing the likelihood of an undetected fallen conductor.

Intertie Protection

Use the SEL-651R to interconnect microgrids and DERs to area electric power systems. It meets and exceeds the requirements for use at a point of interconnection or point of common coupling, per IEEE 1547-2018. Additionally, the SEL-651R supports fast islanding detection, which ensures that the DER is offline when the utility attempts to reclose on the feeder.

Advanced Communications Interfaces and Protocols

Easily integrate the SEL-651R into SCADA or distribution automation systems. Both EIA-232 and EIA-485 serial ports are available as well as two metallic or one or two fiber Ethernet ports. Protocols include DNP3, Modbus, IEC 61850, and the Parallel Redundancy Protocol (PRP). PRP is an Ethernet-based protocol that provides seamless network failover and is available on SEL-651R recloser controls with dual Ethernet ports (copper or fiber). A front USB port provides high-speed local access for loading settings or downloading reports.

Six Voltage Inputs

The SEL-651R measures the voltage on both sides of the recloser, making it especially valuable in autonomously controlled distribution automation schemes. The low-energy analog (LEA) inputs allow the use of integrated voltage sensors, which reduce costs and simplify installation.

Advanced Protection

The SEL-651R includes many advanced protection features that ensure secure and reliable operation, including second-harmonic blocking and rate-of-change-of-frequency (ROCOF) controls. These features minimize undesired operations associated with transformer inrush current and provide faster decoupling of distributed generation on a feeder. A frequency window element verifies that the frequency is within normal parameters before closing the recloser to restore power. Such frequency qualification is especially critical when DERs are providing the restoration power. Dedicated frequency window elements for each side of the recloser allow for restoration from either side of the open recloser.

Secure Ethernet Communications

Use Media Access Control Security (MACsec) to enhance the existing cybersecurity of the SEL-651R and reduce operation and maintenance expenses. MACsec secures Ethernet traffic (except IEC 61850 GOOSE and PRP) between an SEL-651R and SEL-3622 or Key Server MACsec-enabled routers/radios, providing confidential communication and maintaining message integrity between devices. Key management is automated via the MACsec Key Agreement (MKA) to simplify commissioning and improve the overall user experience.



Product Overview

Navigation controls make information readily accessible.

Optional software-programmable tricolored LEDs for improved status indication.

EIA-232 front serial port provides local access.

Programmable control
pushbuttons and configurable
labels for ease of operation.

Single-door control option shown.

Standard three-point latch
for improved physical security.

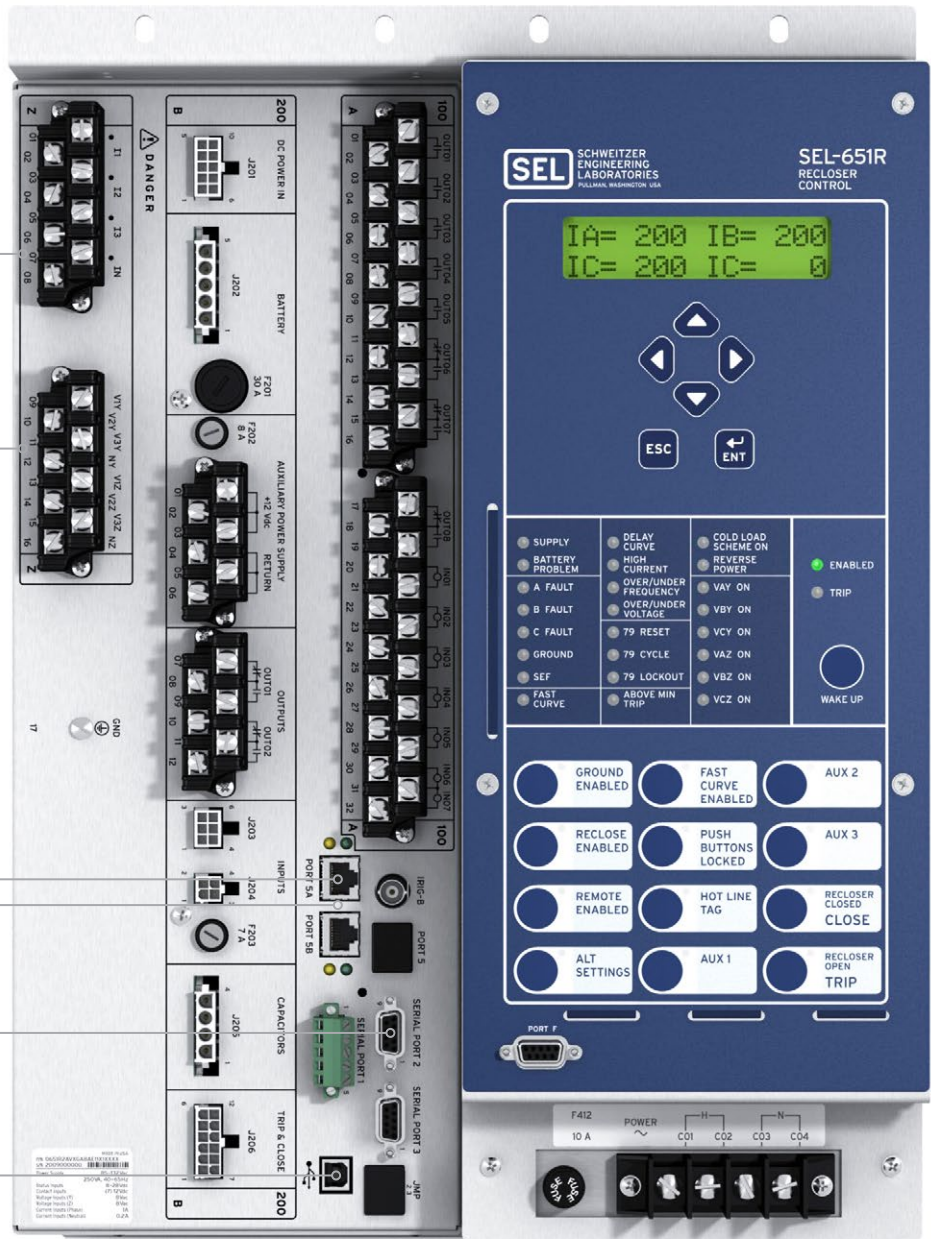
64 SELogic variables replace traditional panel switches with 32 latching, 16 local, and 32 remote control points.

Standard six voltage inputs with PT and LEA options for measurements on both sides of the recloser.

Standard multisession Modbus TCP and DNP3 and optional IEC 61850 for easy integration with existing systems.

Standard dual copper Ethernet ports allow for communication between devices and provide redundancy. An optional single or dual fiber Ethernet port or a combination with copper and fiber ports is available.

Two standard EIA-232 ports, an EIA-485 port, and a USB port provide several communications options.



Single-door control option shown.

Adapt your coordination scheme in the SEL-651R based on the location of the fault. The SEL-FT50 and SEL-FR12 System wirelessly sends fault information in 6 ms to the recloser control.

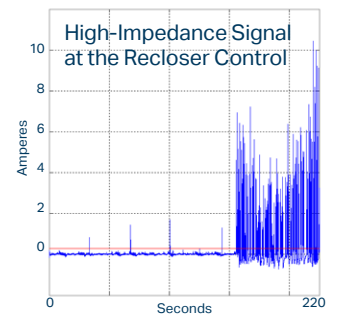
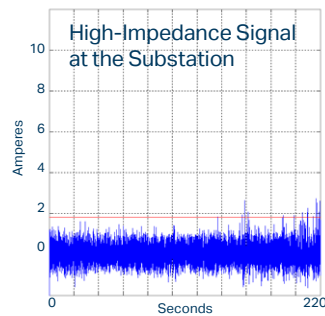
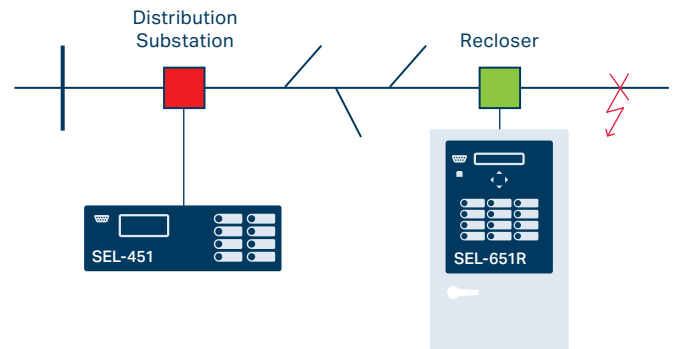
High-Impedance Fault Detection

High-impedance faults, such as downed conductors on poorly conductive surfaces, create fault current levels that are too low to be detected by conventional over-current protection elements. The SEL-651R with AST detects many high-impedance faults while maintaining secure protection.

The SEL-651R with AST is easy to understand, set, and test. It includes straightforward protection algorithms with two sensitivity levels and a test mode.

Coordination

When AST is present in multiple devices on a single feeder, the relay or control closest to a high-impedance fault detects the stronger signal and isolates the fault to coordinate with other relays or controls on the system. This coordination isolates only the faulted segment of the line and minimizes the number of customers affected by a high-impedance fault. You can use communications between relays to improve AST protection performance on complex feeder arrangements or in the case of feeder reconfiguration.



The SEL-651R offers high-impedance fault detection, providing improved detection by being closer to the fault.

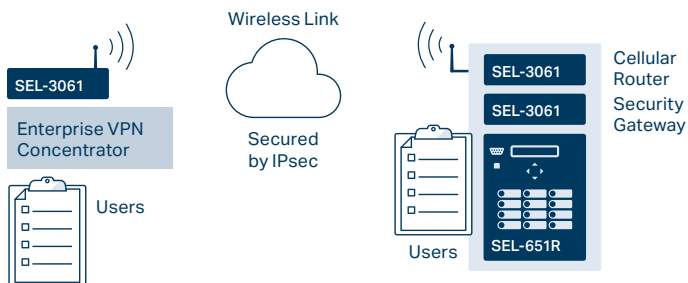


Multilayer Security

Configure the SEL-651R with MACsec to obtain point-to-point security. Add IPsec to the SEL-3622 to obtain end-to-end network security.

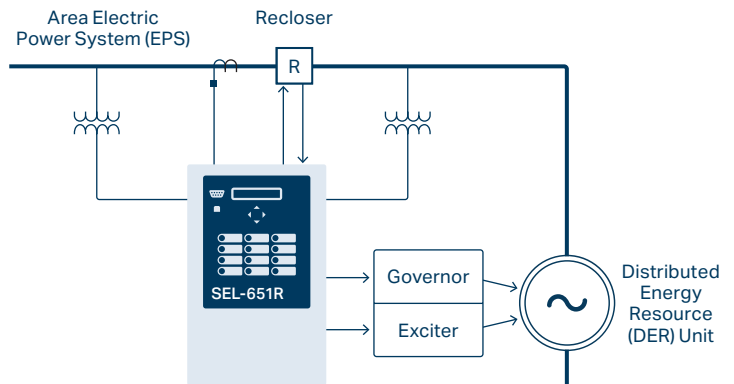
IPsec

Add the SEL-3622 Security Gateway for encrypted IPsec VPN access to the SEL-651R. The SEL-3622 also acts as a firewall and protects against malware with exe-GUARD® allowlist antivirus. The SEL-3622 authenticates users, manages passwords, logs and reports Syslog events, and has physical security sensors to alert on unauthorized access to the SEL-651R cabinet.



Protect DER Interconnections

Use the SEL-651R to interconnect microgrids and DERs to area electric power systems. Together, the SEL-651R and recloser provide a compact pole-top solution for interconnecting DERs with overhead distribution lines. Utilities, consultants, microgrid owners, and DER owners can use this solution at the point of common coupling, as defined in IEEE 1547-2018. The SEL-651R works with microgrid controllers and generator control systems, and provides fast islanding detection to ensure protection of the DER.



Typical utility and DER interconnection.

MACsec

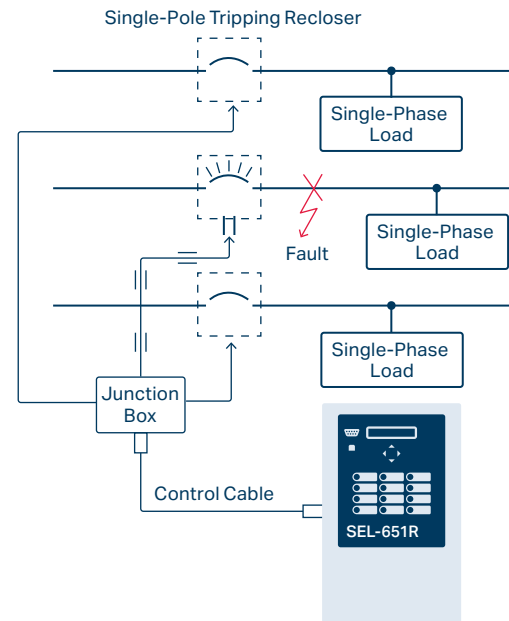
The SEL-651R utilizes MACsec to secure Ethernet traffic (except IEC 61850 GOOSE and PRP), providing integrity, authenticity, replay prevention, and optional confidentiality to communications. MACsec is a nonroutable, "hop-by-hop" cryptographic protocol that protects Ethernet frames starting at the data link layer (OSI Layer 2).

When enabled, MACsec establishes a secure, bidirectional link between connected devices after security keys have been exchanged and verified. Key management is automated with MKA, which provides capabilities including network discovery, mutual authentication, key management, parameter management, and bounded delay. Commissioning can be further simplified with a configuration mode that autopopulates the necessary settings.

Minimize Outage Impact on Customers With Single-Phase Tripping in the SEL-651R

Improve reliability by maintaining service to customers who are not on the faulted phase of the feeder. Available trip-reclose-lockout operation modes for single-phase tripping are:

- Three-phase trip/reclose, three-phase lockout.
- Single-phase trip/reclose, three-phase lockout.
- Single-phase trip/reclose, single-phase lockout.
- Single-phase trip/reclose, single-phase lockout, three-phase lockout if two or more phases are involved.

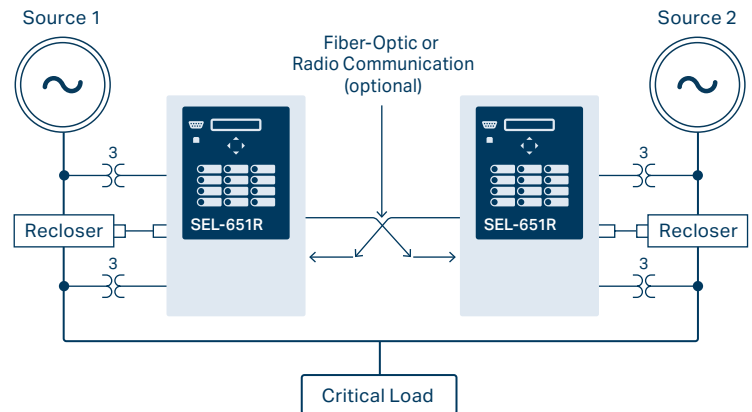


Single-phase tripping isolates only the faulted phase.

Apply Autosource Transfer Schemes

The SEL-651R lets you maintain reliable power for critical loads that require dual-feeder service. Using SEL MIRRORED BITS communications technology between recloser controls, you can make intelligent operation decisions to bring nonfaulted loads back online. MIRRORED BITS lets you communicate securely and share recloser status, source status, and other logic information between SEL-651R Recloser Controls.

Customize the return-to-normal action by incorporating a synchronism check for parallel source return or break-before-make when source voltages are not in phase.



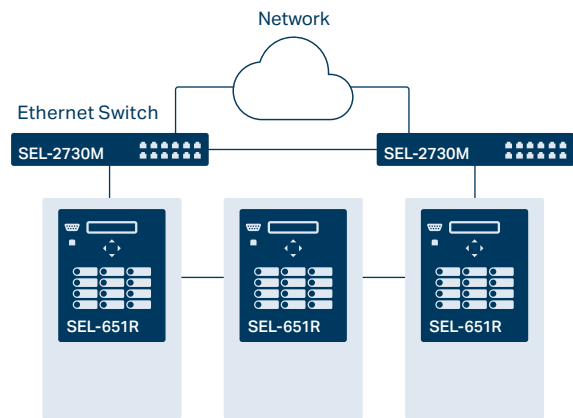
Use the SEL-651R as part of an autosource transfer scheme.

Integration

Quickly integrate the SEL-651R into Ethernet or serial communications networks with standard DNP3 and Modbus protocols or optional IEC 61850. The SEL-651R comes standard with three independent EIA-232 serial ports, one EIA-485 port, one USB port, and two metallic Ethernet ports for external communication. Optional alternatives for the Ethernet ports include a single fiber port, dual-redundant fiber ports, and the single copper port and single fiber port option. PRP is available as a standard option on SEL-651R recloser controls with dual Ethernet ports. PRP is an Ethernet-based redundancy protocol that provides seamless network failover for systems such as electrical substations.

Using an Ethernet connection, you can upload firmware to the SEL-651R in less than a minute. You can also download 60-cycle-length, 128-samples-per-cycle event reports.

The Ethernet ports provide access for local and remote engineering, SCADA, real-time protection and control, loop restoration, islanding detection, blocking, and fast bus tripping schemes. The SEL-651R works well in distribution automation systems, including loop schemes and high-speed, peer-to-peer systems.



Communications Protocols
MIRRORED BITS communications
IEEE C37.118 synchrophasors
IEC 61850 GOOSE*
IEC 61850 MMS*
Modbus TCP
Modbus RTU
Telnet
DNP3 Serial
DNP3 IP
Web server
Simple Network Time Protocol (SNTP)
FTP
SEL Fast Messages
ASCII
IRIG-B
PRP

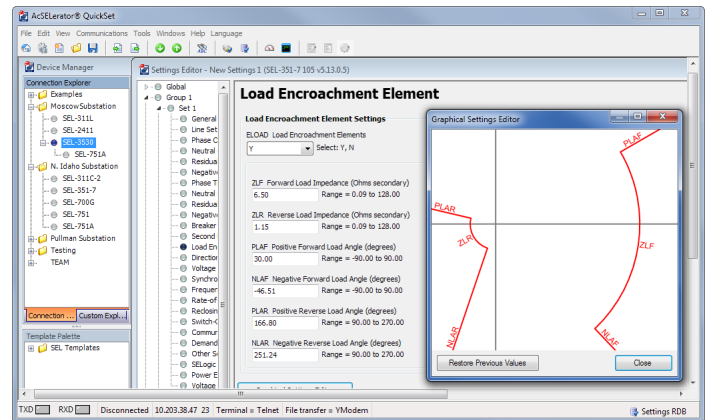
Communications Media
10/100BASE-T Ethernet
10/100BASE-FX Ethernet*
EIA-232 serial
EIA-485 serial
USB Type B
BNC (IRIG-B)

*Optional feature

ACSELERATOR® Software

Save time and simplify settings with free ACSELERATOR QuickSet® SEL-5030 Software. QuickSet lets you:

- Develop settings offline with a menu-driven interface and direct links to the instruction manual for easy help reference. You can speed up installation by copying existing settings files and modifying application-specific items.
- Quickly commission SEL-651R Recloser Controls. You can use settings templates to customize the interface so field personnel see only the settings they need when working with the recloser control. Sample templates for common applications are available on the SEL website.
- Access your settings template anytime. You can store templates on the SEL-651R and retrieve them for easy access in the field.
- See more prefault and post-fault data with high-resolution 60-cycle-length event reports at 128 samples per cycle to identify the root cause of problems or make decisions about system design.



View system data and streamline relay settings with QuickSet.

Monitoring and Metering

The SEL-651R measures signal distortions up to the 16th harmonic for each current and voltage input. The recloser control calculates total harmonic distortion and provides the value as a control element for alarming and tripping.

You can reduce the installed cost of feeder control panels by avoiding separately mounted metering devices. SEL high-accuracy metered quantities include root-mean-square (rms) phase voltages, currents, and power.

Customization

SEL offers a variety of accessories to optimize recloser control efficiency and operation. You can create a customized solution to meet your application needs. Some popular accessories include a cabinet heater, an accessory shelf, fuse blocks, and prewired connectors. Many accessories are available for factory installation or as field upgrade kits. Listed below are some of the accessories available to create a robust recloser solution.



SEL-2401 Satellite-Synchronized Clock

Provide precise time for synchrophasor measurements with the SEL-2401, which has ± 100 nanosecond accuracy for automatically updated time.



SEL-2925 BLUETOOTH® Serial Adapter

Protect personnel from hazardous conditions by enabling them to control and monitor equipment from their trucks or other safe locations. The SEL-2925 transmits data up to 115,200 bits per second to distances of 100 meters (300 feet) in typical applications.



SEL-3031 Serial Radio Transceiver

Combine three serial ports into one radio, allowing up to three different connections and protocols to operate simultaneously. The spread-spectrum, frequency-hopping radio transmits data in the license-free 900 MHz ISM band, providing an economical communications path or backup communications system.



SEL-3061 Cellular Router

The SEL-3061 is a secure wireless communications solution designed for critical applications. For electric utilities, the router provides connectivity to devices like recloser controls, motor-operated switches, capacitor banks, voltage regulators, substations, and much more. The combination of serial and Ethernet ports provides application flexibility, and using public networks with secure tunneling makes installation easy without sacrificing security.



SEL-3622 Security Gateway

A router, VPN endpoint, and firewall device, the SEL-3622 can perform secure and proxy user access for the SEL-651R. The SEL-3622 helps create a user audit trail through strong, centralized, user-based authentication and authorization to the recloser control. The SEL-3622 secures your control system communications with a stateful deny-by-default firewall, strong cryptographic protocols, and logs for system awareness.



Door Position Indication Switch

Monitor the position of the enclosure door, and send an alarm to SCADA when the cabinet has been opened. You can use this simple security feature to detect and respond to unwanted intruders.



SEL Fault Indicators and Sensors

Team the SEL-651R with the SEL-FT50 and SEL-FR12 System or SEL faulted circuit indicators to provide fault location information for more intelligent protection decisions and to reduce restoration times.

The BLUETOOTH® word mark and logos are registered trademarks owned by Bluetooth SIG, Inc., and any use of such marks by SEL is under license.

SEL-651R Specifications

General Specifications

Compatible Reclosers	G&W Electric: Control Power Viper-S, Viper-LT, Viper-S, Viper-SP, Viper-ST, and Viper-G Other reclosers: Elastimold Molded Vacuum Recloser (MVR), Joslyn TriMod 300R, Joslyn TriMod 600R, OVR-3 (15 and 27 kV only), Gridshield 32-Pin (15, 27, and 38 kV), Gridshield 42-Pin (15, 27, and 38 kV), VR-3S (15 and 27 kV only), and Togami FAULT CLEAR 32-Pin (27 kV) CXE, NOVA Auxiliary Powered, NOVA Control Powered, NOVA NX-T, NOVA NX-STs, NOVA-TS Triple-Single, NOVA-STs Triple-Single, RE, RVE, RXE, VSA, VSO, VWE, VWVE 27, VWVE 38X, WE, WVE27, and WVE38X GVR (when equipped with interface module) SDR Triple-Single and SDR Three-Phase OSM AI_4
Current Inputs	IA, IB, and IC: 1 A nominal IN: 0.2 A nominal
AC Voltage Inputs	300 V maximum (PT) 8 V maximum LEA (IEEE C37.92) Eaton (Cooper) internal LEA (37 V) Lindsey SVMl LEA (200 V, 1 M Ω) Siemens SDR LEA inputs
Frequency and Phase Rotation	60/50 Hz system frequency ABC or ACB phase rotation
Communications Ports	EIA-232 (3 ports) USB Type B EIA-485 Ethernet port: Dual 10/100BASE-T RJ-45 connectors Single 100BASE-FX LC connector (optional) Dual 100BASE-FX LC connectors (optional) Single 10/100BASE-T RJ45 connector and single 100BASE-FX LC connector (optional)
Communications Protocols	SEL, IEC 61850 (optional), PRP (for dual Ethernet copper or fiber models), MIRRORRED BITS communications, Modbus, DNP3, ASCII protocols, SNTP, IEEE C37.118 (synchrophasors), built-in web server
DER Interconnection	IEEE 1547-2018
Power Supply	120 Vac, 230 Vac, 48 Vdc, or 125 Vdc
Weight	<125 lb without accessories
Battery Reserve	≥ 3.2 hours at -40°C , and ≥ 9.6 hours at $+25^{\circ}\text{C}$ (16 Ah standard) ≥ 8 hours at -40°C , and ≥ 24 hours at $+25^{\circ}\text{C}$ (40 Ah optional)
Operating Temperature	Relay module: -40° to $+85^{\circ}\text{C}$ (-40° to $+185^{\circ}\text{F}$) Batteries: -40° to $+80^{\circ}\text{C}$ (-40° to $+176^{\circ}\text{F}$) Entire SEL-651R unit: -40° to $+55^{\circ}\text{C}$ (-40° to $+131^{\circ}\text{F}$)



Making Electric Power Safer, More Reliable, and More Economical
+1.509.332.1890 | info@selinc.com | selinc.com

© 2024 by Schweitzer Engineering Laboratories, Inc.
PF00295 • 20240209

